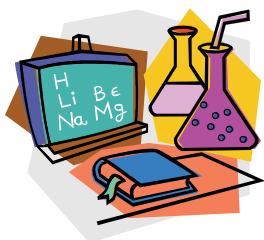


## History

Super Science Saturday was started in 1989 by Mr. Jim Wallace, a sixth grade science teacher at Ridgewood's Benjamin Franklin Middle School. What began solely as a science day for students has evolved into a broad experience for children, adults, and families from all over the tri-state area. Now in its 28th year, Super Science Saturday is an annual, half-day, non-competitive event providing a showcase for the variety of scientific explorations and applications that are alive in our community. Though Mr. Wallace has since retired from the Ridgewood Public Schools, his small idea has grown to a day that brings over 1,500 area residents together to celebrate science.



## Thank You!

The goal of Super Science Saturday is to bring the wonder of science to the community through both professional and student presentations.

It is because of you, our presenters, that we are able to continue to entice children and the community. Each year, you truly inspire us all by not only bringing the wonders of science, but also by sharing your spirit and love for science with us.

From all of us at Super Science Saturday, thank you!

## Super Science Saturday

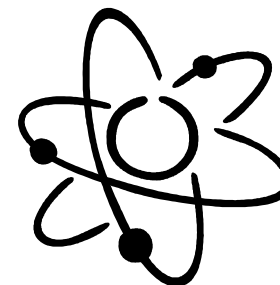
31 Circle Avenue  
Ridgewood, NJ 07450

201-300-2900  
[info@supersciencesaturday.org](mailto:info@supersciencesaturday.org)

## A Guide for Presenters

# Super Science Saturday

The  
Greatest  
Science Extravaganza  
in Northern New Jersey



# The Day-of

## Our Site

Ridgewood High School!

Address: 627 East Ridgewood Avenue,  
Ridgewood, NJ 07451

## Directions

On Route 17 S/N, exit onto East Ridgewood Avenue toward Ridgewood. Proceed through the lights at Paramus Road, Pleasant Avenue, and North Van Dien.

The entrance to Ridgewood High School is one half block from the intersection at North Van Dien and East Ridgewood Avenue.

Turn right into the school parking lot. Parking is also available on local streets around the school.

Please enter the High School near the three pay phones directly adjacent to the parking lot facing Ridgewood Avenue.

## Arriving and Setting Up

Super Science Saturday begins to transform Ridgewood High School at 3:00pm on Friday afternoon.

Presenters are welcome to setup on either:

- \* Friday, February 26th between 5:00pm & 7:00pm
- \* Saturday, February 27th beginning at 7:45am

## Phone Contact

If you have any last minute questions, get lost on the way, or need anything, please don't hesitate to contact us by phone all day on Friday or Saturday @ 201-306-8700.



[www.supersciencesaturday.org](http://www.supersciencesaturday.org)

## FYI

- We will have volunteers waiting at the main entrance to meet you and direct you to your table.
- When you arrive at your table, please ensure everything you requested is there—if it isn't, let us know.
- Please fill out your name tags so we all can get to know each other better.
- There will be a Presenter's Packet with information on the day and bagel/coffee coupons for you to use in the cafeteria.
- During the day, volunteers will be wearing white lab coats and/or name tags—please let us know if you need anything.

**The 28th Annual**

**Super Science  
Saturday**

**February 27th, 2016  
9 am—1:30 pm**